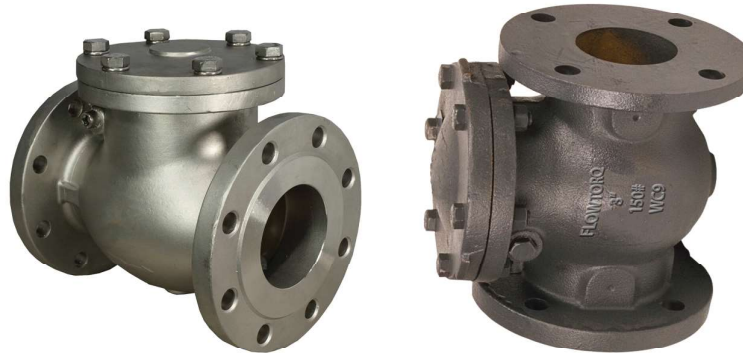




CHECK VALVES - SWING CHECK VALVES



Check Valves come in various designs such as Swing Check, Lift Check (Piston type), Dual Plate, Tilting Disc and Non-Slam types. The basic application for all check valves are totally opposite to all the other valves. It is it prevents the back flow of process fluid. Typically the closure member is the disc which is either self operated by gravity and force by the back flow or either by a spring which forces the disc or plates to rest on body seats thereby sealing and preventing the back flow. Swing check valves are most widely used followed by lift check valves and dual plate check valves.

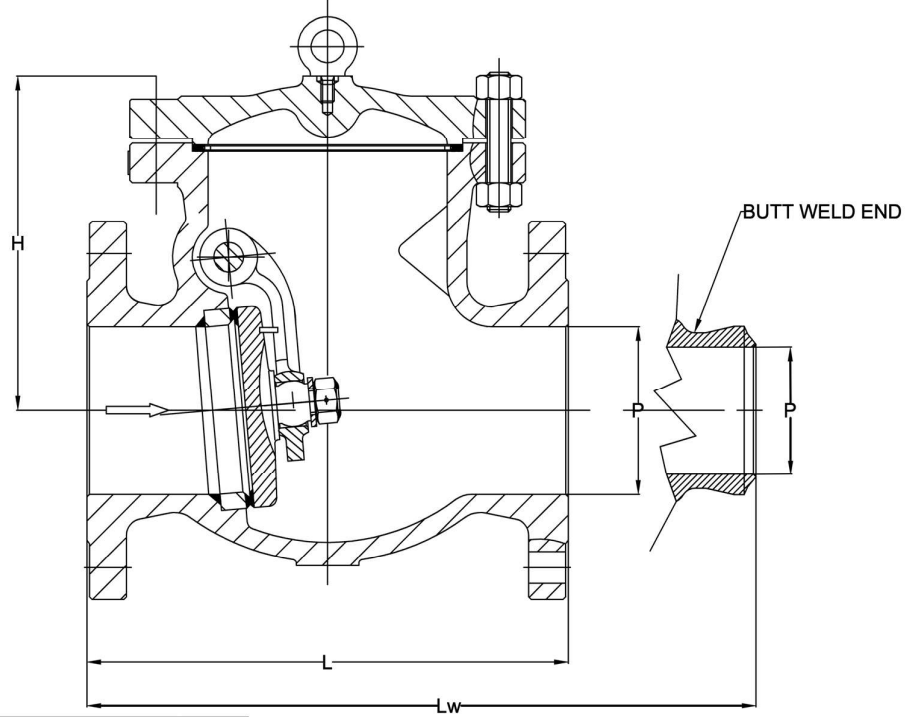


DESIGN STANDARD	
Bolted Bonnet Swing Check Valve	BS1868 & ASME B16.34 & API 6D
Pressure Seal Swing Check Valve (Long & Short pattern)	ASME B16.34
Face to Face / End to End Dimensions	ASME B16.10 / ISO 5752
End Flanged dimensions	ASME B16.5 / ISO 7005-1, ASME B16.47-A&B MSS SP-44 & API 605
Butt-weld End dimensions	ASME B16.25
Valve inspection & testing	BS1868 & ISO 5208 & BS6755
Pressure - Temperature rating	ASME B16.34
TEST / INSPECTION	METHOD
Visual Inspection	MSS SP-55
Marking	MSS SP-25 & ISO5208
Dimensional Inspection	Applicable valve
Chemical Analysis	ASTM E350
Mechanical Properties	ASTM A370
Liquid Penetrant Inspection	ASTM A165
Magnetic Particle Inspection	ASTM E709
Radiographic Inspection	ASME B16.34
Ultrasonic Inspection	ASTM A388
Pressure Testing	API 598 / ISO 5208

API 600 TRIM CHART			
API 600TRIM N ^o	Nominal TRIM	Stem / Backseat	Seating Surface Body / Wedge
1	F6	13Cr	13Cr
2	304	18Cr-8Ni	18Cr-8Ni
3	F310	25Cr-20Ni	25Cr-20Ni
4	Hard F6	13Cr	Hard 13Cr
5	Hardfaced	13Cr	Co-Cr A
5A	Hardfaced	13Cr	Ni-Cr
6	F6 and Cu-Ni	13Cr	13Cr and Cu-Ni
7	F6 and Hard F6	13Cr	13Cr and Hard 13Cr
8	F6 and Hardfaced	13Cr	13Cr and Co-Cr A
8A	F6 and Hardfaced	13Cr	13Cr and Ni-Cr
9	Monel	Ni-Cu Alloy	Ni-Cu Alloy
10	316	18Cr-8Ni-Mo	18Cr-8Ni-Mo
11	Monel and Hardfaced	Ni-Cu Alloy	Ni-Cu Alloy and Trim 5 or 5A
12	316 and Hardfaced	18Cr-8Ni-Mo	18Cr-8Ni-Mo and Trim 5 or 5A
13	Alloy 20	19Cr-29Ni	19Cr-29Ni
14	Alloy 20 and Hardfaced	19Cr-29Ni	19Cr-29Ni and Trim 5 or 5A
15	Hardfaced	18Cr-8Ni	Co-Cr A
16	Hardfaced	18Cr-8Ni-Mo	Co-Cr A
17	Hardfaced	18Cr-10Ni-Cb	Co-Cr A
18	Hardfaced	19Cr-29Ni	Co-Cr A



CHECK VALVES - SWING CHECK VALVES - 150# & 300#



150#				
DN (inch)	L	Lw	H	WEIGHT (Kg) Approx
50 (2")	203	203	135	17
65 (2½")	216	216	155	21
80 (3")	241	241	168	29
100 (4")	292	292	235	42
125 (5")	330	330	249	59
150 (6")	356	356	277	68
200 (8")	495	495	339	118
250 (10")	622	622	398	197
300 (12")	698	698	525	302
350 (14")	787	787	553	372
400 (16")	914	914	584	570
450 (18")	978	978	668	665
500 (20")	978	978	712	900
550 (22")	1067	1067	725	1100
600 (24")	1295	1295	740	1359
650 (26")	1295	1295	780	1850
700 (28")	1448	1448	810	2000
750 (30")	1524	1524	1050	2400
900 (36")	1956	1956	1390	3380

(Code-SS)

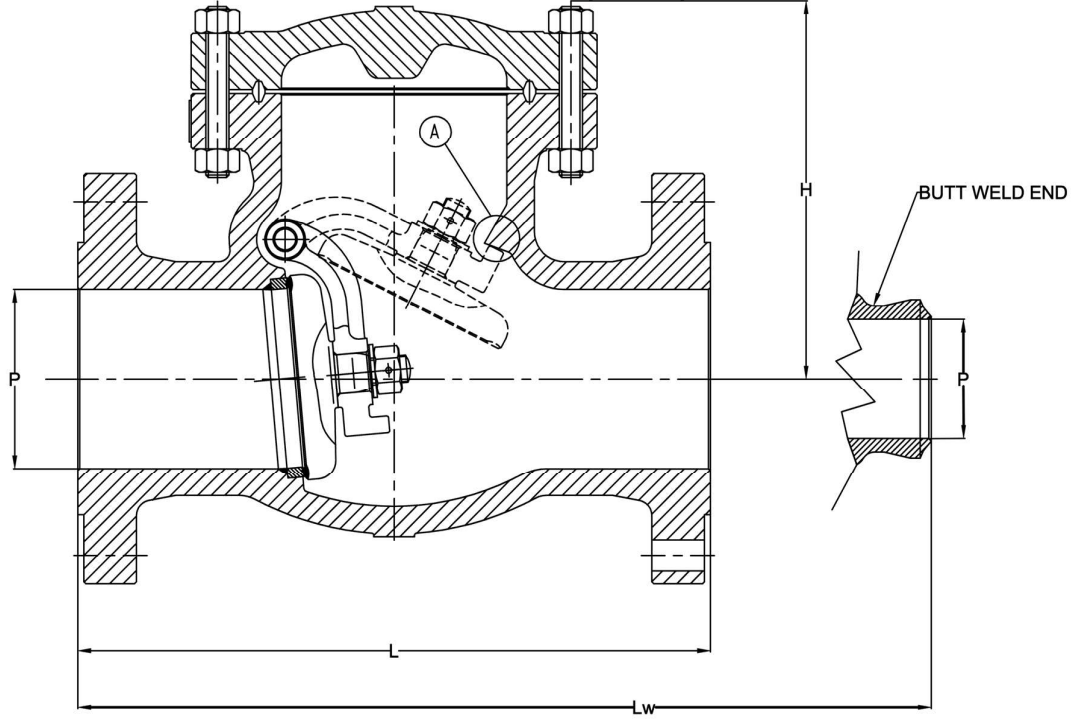
300#				
DN (inch)	L	Lw	H	WEIGHT (Kg) Approx
50 (2")	267	267	158	21
65 (2½")	292	292	167	35
80 (3")	318	318	188	43
100 (4")	356	356	259	60
125 (5")	400	400	281	85
150 (6")	444	444	319	131
200 (8")	533	533	401	213
250 (10")	622	622	483	384
300 (12")	711	711	555	449
350 (14")	838	838	585	680
400 (16")	864	864	615	840
450 (18")	978	978	643	1025
500 (20")	1016	1016	681	1180

(Code-SS)





CHECK VALVES - SWING CHECK VALVES - 600#, 900#, 1500# & 2500#



600#				
DN (inch)	L	Lw	H	WEIGHT (Kg) Approx
50 (2")	292	292	197	26
65 (2½")	330	330	207	45
80 (3")	356	356	231	68
100 (4")	432	432	281	90
125 (5")	508	508	319	140
150 (6")	559	559	362	200
200 (8")	660	660	437	360
250 (10")	787	787	490	673
300 (12")	838	838	528	875
350 (14")	889	889	572	944
400 (16")	991	991	660	1220

(Code-SS)

1500#				
DN (inch)	L	Lw	H	WEIGHT (Kg) Approx
50 (2")	368	368	265	76
65 (2½")	419	419	275	93
80 (3")	470	470	290	140
100 (4")	546	546	385	232
125 (5")	673	673	430	362
150 (6")	705	705	470	490
200 (8")	832	832	625	990

(Code-SS)

900#				
DN (inch)	L	Lw	H	WEIGHT (Kg) Approx
50 (2")	368	368	240	76
65 (2½")	419	419	250	86
80 (3")	381	381	260	98
100 (4")	457	457	320	145
125 (5")	559	559	350	175
150 (6")	610	610	382	259
200 (8")	737	737	530	565

(Code-SS)

2500#				
DN (inch)	L	Lw	H	WEIGHT (Kg) Approx
50 (2")	451	451	315	100
65 (2½")	508	508	345	185
80 (3")	578	578	380	225
100 (4")	673	673	410	370
125 (5")	794	794	495	595
150 (6")	914	914	560	805
200 (8")	1022	1022	695	1320

(Code-SS)

